



Concrete Masonry Association of California and Nevada



# Profiles in Architecture

Winter 2023

*Why Masonry?*

[www.whymasonry.org](http://www.whymasonry.org)



## Inside this issue:

Oxford Academy Music  
and STEAM Program

2

El Cajon Valley High School  
Student Services and  
Performing Arts Buildings

3

Life Church

4

Riverside Preparatory Academy New  
Locker Room and Office Spaces

5

Anthony Munoz Community Center

6

UC San Diego Warren Field  
Athletic House

7

CMACN Producer Members

8

*Life Church*  
*Van Woert Bigotti Architects*  
*Photo by Vance Fox Photography*



**ARCHITECT:**  
Perkins Eastman Architects DPC  
3194D Airport Loop Drive  
Costa Mesa, CA 92626

Brian Dougherty, FAIA, LEED® AP  
*Principal-in-Charge*

**STRUCTURAL ENGINEER:**  
Petra Structural Engineers

**GENERAL CONTRACTOR:**  
Erickson-Hall Construction

**MASONRY CONTRACTOR:**  
Kretschmar & Smith, Inc.

**BLOCK PRODUCER:**  
Angelus Block Company, Inc.

**OWNER:**  
Anaheim Union High School District

**©PHOTOGRAPHY:**  
Nils Timm Visuals

# Oxford Academy Music and STEAM Program

Cypress, California



**ARCHITECT'S COMMENTARY:** The Oxford Academy is a magnet high school within the Anaheim Union High School District, recently recognized as the number one High School Campus in California. In an effort to establish a premier STEAM center on campus, new spaces have been designed to house music, technology, and classrooms. Existing buildings have been converted into a Library/Learning Resource Center and STEAM labs, a configuration that is well suited to the implementation of the new program objectives. The STEAM building includes two classrooms with space for robotics, 3D printing, and wood shop equipment, as well as exterior storage space for materials. Twenty-first century furnishings create a lively space for students to gather and study, with students migrating to outdoor study areas. To anchor the STEAM curriculum, the Academy has developed the west end of campus with a new campus perimeter; the solution creating a new music building to enhance the performing arts program that includes band, choral, and ensemble spaces.

**WHY MASONRY?** The new music building, which fronts onto the street, defines a new campus identity, becoming the face of the school using burnished concrete masonry units (CMUs), fiber board siding, and metal roof and wall panels. Designed with an acoustical engineer, the facility maximizes flexibility and maintains a diverse environment for a variety of music groups with band equipment storage, practice rooms, uniform storage, and three large music rooms. The decorative CMU exterior wall faces the campus entry, providing not just a durable and secure perimeter, but a beautiful textured finish that speaks to the quality of this new campus addition. The CMUs also provide an acoustical separation between street noise, adjacent campus activities, and performance spaces. This CMU music building's acoustics are so effective, professional community choral and music groups identify this location to be their preferred practice venue.





# El Cajon Valley High School Student Services and Performing Arts Buildings

El Cajon, California



**ARCHITECT'S COMMENTARY:** Desire to reinvent, redevelop, and revitalize was stirred up when the 1950's El Cajon Valley High School (ECVHS) campus came to mind. A large team collaborated to design, bid, and build the ECVHS modernization with a multi-prime project delivery. School staff even provided valuable insight, and collaboration with Energy Company ensured energy efficiency of the project.

Accomplished over a ten-year period, the redevelopment of this inner-city high school of 2,300 students utilized a combination of creative site planning, building modernizations, and the introduction of new high-performance campus infill facilities. The Final Phase involved the concrete masonry unit (CMU) construction of the 13,300-square-foot Student Services and the 19,500-square-foot Event Center buildings. The Student Services building includes offices, conference rooms, a registrar office, health suite, guidance counseling, family resource center, career guidance gathering, community liaison, and volunteer's space. The Event Center includes a large event center space, a music classroom, music practice rooms, sound control rooms, as well as a black box performance and classroom space.

**WHY MASONRY?** At the heart of the El Cajon Valley High School campus is its centers of activity. Creating a cohesive campus feel, the Student Services, Sports Center, and Event Center are CMU construction in a contextual fashion. Structurally, these projects are ideal for the use of masonry as CMU tolerates heavier high school use well without damage nor sacrificing the desired esthetic. Buildings like these necessitate significant acoustical isolation from their surrounding environment and CMU reduces sound transfer between spaces. Additionally, it provides significant thermal mass when compared to standard wood or metal stud construction, helping maintain a more consistent indoor temperature. In turn, reducing the time air conditioning and heating systems operate at their highest output speeds, where they are the loudest, and producing less noise. CMU was a budget-friendly choice that freed up interior space by eliminating perimeter columns. It is also the most natural and economic choice in aligning structural, acoustical, and architectural goals for the building shell, as witnessed at ECVHS.

**ARCHITECT:**  
Sprotte Watson Architecture  
and Planning

450 South Melrose Drive, Suite 200  
Vista, CA 92084

Russell Watson, AIA, LEED® AP  
Patricia Sprotte, AIA, LEED® AP  
**Principals-in-Charge**

**ACOUSTICAL ENGINEER:**

Salas O'Brien

**MECHANICAL ENGINEER:**

Pocock Design Solutions

**STRUCTURAL ENGINEER:**

Wiseman + Rohy Structural Engineers

**CONSTRUCTION MANAGER:**

Balfour Beatty US

**MASONRY CONTRACTOR:**

Modern Masonry

**BLOCK PRODUCER:**

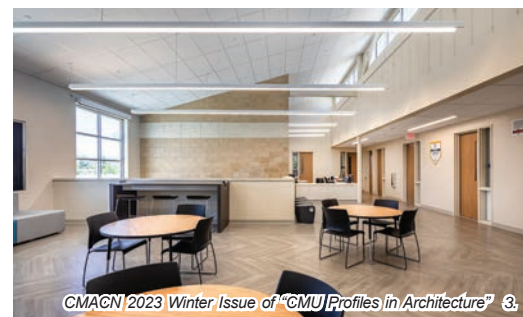
RCP Block & Brick, Inc.

**OWNER:**

Grossmont Union High School District

**©PHOTOGRAPHY:**

Pablo Mason





**ARCHITECT:**  
Van Woert Bigotti Architects  
1400 South Virginia Street, Suite C  
Reno, Nevada 89502

Angela S. Bigotti, AIA  
**Principal-in-Charge**

Danielle Fabri, AIA  
**Project Architect**

Jack Hawkins, AIA  
**Associate Architect**

**STRUCTURAL ENGINEER:**  
Bjur Structural Engineering Ltd.

**GENERAL CONTRACTOR:**  
United Construction

**MASONRY CONTRACTOR:**  
Kemper Masonry

**BLOCK PRODUCER:**  
Basalite Concrete Products, LLC

**OWNER:**  
Life Church

**©PHOTOGRAPHY:**  
Vance Fox Photography

# Life Church

## Reno, Nevada



**ARCHITECT'S COMMENTARY:** Life Church is a rapidly growing church in Reno, Nevada. Its campus is situated in the southeastern part of town, against the Pah-Rah Mountain range with commanding views of the western Sierra Nevada as well. The project was designed as a multi-phased project to be built over a 10-year time frame. The first two-phases, a Multi-Purpose/Worship space and an adjacent Child Development Center are completed, both of which use integral color masonry as the primary material. Subsequent phases include a 2500-seat Worship Center and K-12 school. The "Grand Porch", includes rich colors of masonry pavers and acts as the main gathering place for fellowship before and after services. The Porch looks out over the Great Lawn and will serve as the main fellowship hall when enclosed with glass in future construction phases.



Budget was a key issue on this project. Concrete masonry units (CMUs) were selected for aesthetics, economy, and speed of construction. A glulam beam superstructure partners with steel to complement the masonry structure. Textured CMU is patterned into the precision face wall as a cost-efficient way to celebrate CMU and improve the tall scale of the walls. The Porch area hosts weddings, sermons, and events that bring everyone together in community; where Life is Church.

**WHY MASONRY?** A simple means of construction was imperative to deliver Life Church on time and on budget. CMU construction offered the highest value in achieving this goal. Though its cost savings were a major factor, the use of different CMU textures and color allowed the design team to add warmth, pattern, and human scale to an otherwise tall, ominous box. Selecting natural materials let the project fit the setting of the high desert environment of Northern Nevada in a comfortable and grounded manner.



# Riverside Preparatory Academy New Locker Room and Office Spaces

Oro Grande, California



## ARCHITECT:

SGH Architects

707 Brookside Avenue  
Redlands, CA 92373

Michael J. Stephens, AIA, NCARB  
*Principal-in-Charge*

## STRUCTURAL ENGINEER:

Hohbach-Lewin, Inc.

## GENERAL CONTRACTOR:

Hamel Contracting, Inc.

## MASONRY CONTRACTOR:

NuWay, Inc.

## BLOCK PRODUCER:

Angelus Block Company, Inc.

## OWNER:

Oro Grande School District

## ©PHOTOGRAPHY:

RMA Architectural Photography



**ARCHITECT'S COMMENTARY:** Riverside Preparatory Academy in Oro Grande, California, commissioned a permanent Locker Building and an Office Building for their high-desert campus that contains both the middle school and the high school. This project represents the first permanently constructed buildings on an all-modular building campus, and are designed to be an integral component in support of the physical education programs at Riverside Preparatory Academy.

As a result of its centralized location, as well as a unifying contextual curved roof gesture, building orientations, protective canopies, and exterior spaces for student and instructor interactions, the project provides a prideful and symbolic connection between the two campuses. The buildings are constructed of concrete masonry units (CMUs), metal roof trusses, and composite metal wall panels, while the Locker Building also incorporates clerestory glazing under a large canopy to allow natural lighting into the spaces throughout the day.

The Locker Building serves both the middle school and high school students and has both a dedicated weight room with a large operable door to allow weight training to occur outside, as well as a dedicated dance studio. The Office Building provides support facilities and space for trainers, the nurse's office, and a much needed laundry and gear storage for the programs.

**WHY MASONRY?** Given the oftentimes harsher-than-normal high desert climate and the type of use this building will see, CMU construction was a must for durability, maintainability, visual performance, as well as its sustainability characteristics. The beauty of the CMUs blends seamlessly into the campus' high desert landscape and asserts itself unapologetically into the center of student and student-athlete activities within the middle of the Riverside Preparatory Academy campus.





# Anthony Munoz Community Center

Ontario, California



**ARCHITECT:**  
**Robert R. Coffee Architect + Associates**

1200 Quail Street, Suite 210  
Newport Beach, CA 92660

Robert Coffee  
*Principal-in-Charge*

**STRUCTURAL ENGINEER:**  
Nelson Consulting Engineers

**GENERAL CONTRACTOR:**  
Hamel Construction, Inc.

**MASONRY CONTRACTOR:**  
Haxton Masonry, Inc.

**BLOCK PRODUCER:**  
ORCO Block & Hardscape

**OWNER:**  
City of Ontario

**©PHOTOGRAPHY:**  
RMA Photography



**ARCHITECT'S COMMENTARY:** Anchoring the prominent southern edge of the Anthony Munoz Park in Ontario, the 13,000-square-foot single-story intergenerational community center includes a 2,500-square-foot multipurpose room, teaching kitchen, two activity/classrooms, Tot Room with outdoor play area, administrative office space, and a 25-yard recreation pool with an enclosed outdoor patio area. A series of steel and wood shade structures provide a shaded seating and lounging area along the southern edge of the pool patio. The building is organized along an east-west sky-lit gallery connecting the pool area on the east with an open courtyard to the west. Located on the north side of the gallery, the multipurpose room opens to a large outdoor patio with immediate views of the park playing fields and distant views to the San Bernardino Mountains. The entry canopy to the building is punctuated by a series of "acrylic-disc-umbrellas" acting as indirect light sources at night and skylights during the day.



**WHY MASONRY?** Concrete masonry units (CMUs) were chosen for this project for their aesthetic and sustainable properties, long term durability, cost and energy efficiency, and the opportunities they presented for texture and color. The walls enclosing the pool area use a combination of a low profile 6" burnished CMUs with intermittent bands of split face CMUs in a contrasting color. This economical construction solution provided a visually distinct and sound reducing enclosure for the pool area. Used in combination with wood, steel, plaster and glass, the CMUs provided an opportunity to develop a strong architectural statement that clearly defined the building's organization and reinforced the architect's goal of allowing the building's detail to be expressed in how the building is constructed. Additionally, the CMUs were produced locally and the architectural detailing provided a subtle visual link to many of the mid-century concrete masonry buildings found in the City of Ontario.





# UC San Diego Warren Field Athletic House

La Jolla, California



**ARCHITECT:**  
**Safdie Rabines Architects**  
925 Fort Stockton Drive  
San Diego, CA 92103

Taal Safdie, AIA, NCARB  
**Principal-in-Charge**

**GENERAL CONTRACTOR:**

BN Builders

**MASONRY CONTRACTOR:**

New Dimension Masonry, Inc.

**BLOCK PRODUCER:**

ORCO Block & Hardscape

**OWNER:**

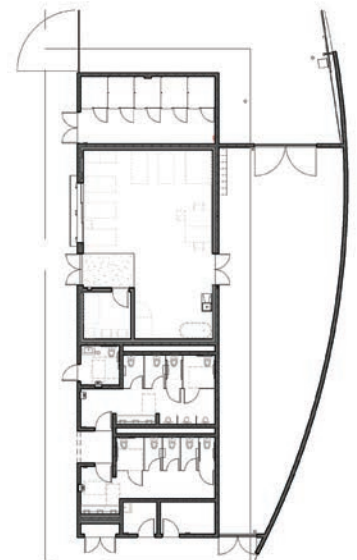
UC San Diego

**©PHOTOGRAPHY:**

Ryan Hills

**ARCHITECT'S COMMENTARY:** The Warren Field House is a 2,300-square-foot structure providing accommodations for UC San Diego's Warren Athletic Field. The House is comprised of a secure equipment storage room with five individual equipment lockers, a training room with five taping tables, rehab equipment, a sports whirlpool, office facilities, a private consultation room, plus restroom facilities accessible from both indoors and out.

**WHY MASONRY?** The Warren Field House and its security wall are constructed of white 8" wide x 6" tall x 16" long concrete masonry units (CMUs), which were selected for several reasons. Aesthetically, the CMUs provide a beautiful contrast to surrounding natural environs and the wood roofing. While the building is designed for functionality and ease of access, it is located in fire-prone Southern California, within a mile of the Pacific Ocean. The CMUs provide fireproof and salinity durability and also lifetime longevity, as CMUs are insusceptible to rotting, mold, and pest damage. Last but not least, the ease of maintenance and the ability to resist wear and tear from athletic use were also factors in the selection of CMUs.





6060 Sunrise Vista Drive  
Suite 1990  
Citrus Heights, CA 95610  
[www.cmacn.org](http://www.cmacn.org)

PRESORT STANDARD  
US POSTAGE  
PAID  
PERMIT NO. 604  
SACRAMENTO, CA

CHANGE SERVICE REQUESTED



#### ARCHITECTURAL CONCRETE MASONRY

Concrete Masonry Units (CMUs) are dimensionally and aesthetically pleasing for ANY of your existing or future designs. CMUs can be integrally pigmented and textured to meet a wide range of client and project demands. CMUs are design flexible, versatile, noncombustible, durable, economical and locally produced.

*Funding for the production and publication of "CMU Profiles in Architecture" is provided by:*

**AIR VOL BLOCK, LLC**  
(805) 543-1314  
San Luis Obispo, CA 93401

**ANGELUS BLOCK  
COMPANY, INC.**  
(818) 767-8576  
Bakersfield, CA 93307  
Fontana, CA 92335  
Gardena, CA 90248  
Indio, CA 92202  
Orange, CA 92668  
Oxnard, CA 93030  
Rialto, CA 92316  
Sun Valley, CA 91352

**BASALITE  
CONCRETE PRODUCTS, LLC**  
(707) 678-1901  
Carson City, NV 89706  
Dixon, CA 95620  
Selma, CA 93662  
Sparks, NV 89431  
Tracy, CA 95376

**CALSTONE COMPANY, INC.**  
(408) 984-8800  
San Martin, CA 95046  
Gilroy, CA 95020

**CEMEX**  
(702) 643-1332  
Las Vegas, NV 89115

**OLDCASTLE**  
(702) 633-5787  
Fontana, CA 92337

**ORCO BLOCK &  
HARDSCAPE**  
(800) 473-6726  
Indio, CA 92203  
Oceanside, CA 92056  
Riverside, CA 92509  
Stanton, CA 90680

**RCP BLOCK & BRICK, Inc.**  
(619) 460-7250  
Lemon Grove, CA 91946  
San Diego, CA 92154

#### **Concrete Masonry Association of California and Nevada (CMACN)**

*a nonprofit professional trade association established in 1977, is committed to strengthening the masonry industry in California and Nevada by:*

- Providing technical information on concrete masonry for design professionals.
- Protecting and advancing the interests of the concrete masonry industry.
- Developing new and existing markets for concrete masonry products.
- Coordinating Members' efforts in solving common challenges within the masonry industry.

**NOTE:** Some photos may have been altered to fit the page format.



For further information contact us at:  
Concrete Masonry Association  
of California and Nevada  
6060 Sunrise Vista Drive, Suite 1990  
Citrus Heights, CA 95610-7004

Tel: (916) 722-1700  
Fax: (916) 722-1819  
Email: [info@cmacn.org](mailto:info@cmacn.org)  
Web Site: [www.cmacn.org](http://www.cmacn.org)